

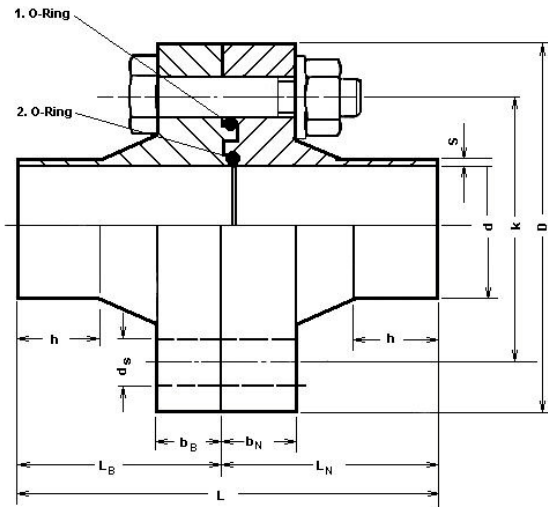


# NAUE GmbH

Sondermaschinen - und Filterbau

Am Rotböhl 5  
64331 Weiterstadt

Tel. 0 61 50 / 97 38 - 0  
Fax. 0 61 50 / 70 18



## Aseptic flange with seal face protection and twin O-ring

Material	Flange	1.4571 / 316 L
		1.4571 / 316 L

Above steel qualities are available ex stock. Other steel qualities such as 316L and other dimensions are available upon request.

### STANDARD-Design for manual welding

OD	d x s	D/K	L	L <sub>B</sub>	L <sub>N</sub>	b <sub>B</sub>	b <sub>N</sub>	h	Screws	ds	O-ring 1	O-ring 2	Part n°
½	12,70 x 1,22	60/40	60	30	30	8	10	6	4/8	9	10,0 x 2,5		05-05001
¾	19,05 x 1,65	65/45	68	32	36	8	10	6	4/10	11	16,0 x 3,0		05-05002
1	25,40 x 1,65	85/60	68	32	36	10	12	6	4/10	11	22,0 x 3,0		05-05003
1 ½	38,10 x 1,65	95/70	69	33	36	10	12	6	4/10	11	36,0 x 3,0		05-05004
2	50,80 x 1,65	115/90	73	35	38	10	12	6	4/10	11	48,0 x 3,0		05-05005
2 ½	63,50 x 1,65	125/100	73	35	38	10	12	6	4/12	13	61,0 x 4,0		05-05006
3	76,20 x 1,65	155/122	73	35	38	10	12	6	4/12	13	74,0 x 4,0		05-05007
3 ½	88,90 x 2,10	170/135	86	41	45	13	15	6	4/12	13	85,0 x 4,0		05-05008
4	101,60 x 2,10	200/160	86	41	45	14	16	6	8/12	13	100,0 x 5,0		05-05009

### ORBITAL-Long design for automatic welding

OD	d x s	D/K	L	L <sub>B</sub>	L <sub>N</sub>	b <sub>B</sub>	b <sub>N</sub>	h	Screws	ds	O-ring 1	O-ring 2	Part n°
½	12,70 x 1,22	60/40	80	40	40	8	10	16	4/8	9	10,0 x 2,5		05-05025
¾	19,05 x 1,65	65/45	80	40	40	8	10	16	4/10	9	16,0 x 3,0		05-05026
1	25,40 x 1,65	85/60	88	42	46	10	12	16	4/10	11	22,0 x 3,0		05-05027
1 ½	38,10 x 1,65	95/70	93	45	48	10	12	16	4/10	11	36,0 x 3,0		05-05028
2	50,80 x 1,65	115/90	93	45	48	10	12	16	4/10	13	48,0 x 3,0		05-05029
2 ½	63,50 x 1,65	125/100	93	45	48	10	12	16	4/12	13	61,0 x 4,0		05-05030
3	76,20 x 1,65	155/122	93	45	48	13	15	16	4/12	13	74,0 x 4,0		05-05031
3 ½	88,90 x 2,10	170/135	106	51	55	14	16	16	4/12	13	85,0 x 4,0		05-05032
4	101,60 x 2,10	200/160	130	64	66	15	17	30	8/12	13	100,0 x 5,0		05-05033

Dimensions/part numbers are subject to change without notice



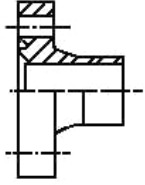
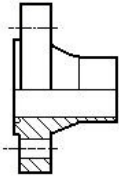
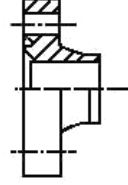
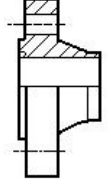

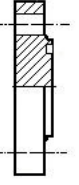
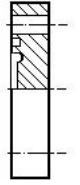
US  
o.D.Tubing

# NAUE GmbH

**Sondermaschinen - und Filterbau**

Am Rotböhl 5  
64331 Weiterstadt

Tel. 0 61 50 / 97 38 - 0  
Fax. 0 61 50 / 70 18

							
	<b>Flange US orbital</b>	<b>flange US orbital</b>	<b>flange US standard</b>	<b>flange US standard</b>	<b>Looser flange US</b>	<b>Blind flange US</b>	<b>Blind flange US</b>
oD							
<b>Aseptic flanges with twin O-ring - US o.D. Tubing</b>							
1/2	05-05105	05-05130	05-05155	05-05180	05-05205	05-05605	05-05805
3/4	05-05107	05-05132	05-05157	05-05182	05-05207	05-05607	05-05807
1	05-05109	05-05134	05-05159	05-05184	05-05209	05-05609	05-05809
1 1/2	05-05111	05-05136	05-05161	05-05186	05-05211	05-05611	05-05811
2	05-05113	05-05138	05-05163	05-05188	05-05213	05-05613	05-05813
2 1/2	05-05115	05-05140	05-05165	05-05190	05-05215	05-05615	05-05815
3	05-05117	05-05142	05-05167	05-05192	05-05217	05-05617	05-05817
3 1/2	05-05118	05-05143	05-05168	05-05193	05-05218	05-05618	05-05818
4	05-05119	05-05144	05-05169	05-05194	05-05219	05-05619	05-05819

Dimensions/part numbers are subject to change without notice